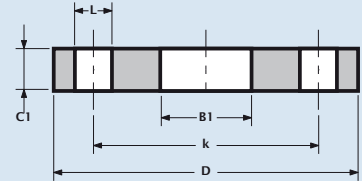
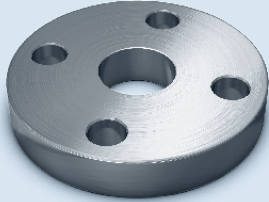


Vlakkelas flens Plain welding flange Bride plate à souder Glatter flansch



EN 1092-1
DN10 - DN1200

TYPE 01/A - PN6



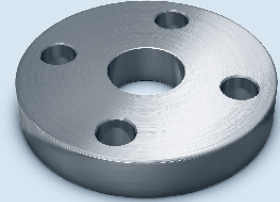
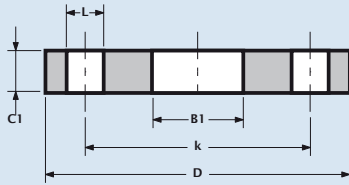
Pipe	Flange Data			Drilling Data			Weight
Nominal pipe size	Outside diameter	Thickness	Bore diameter	Number of holes	Bolt hole diameter	Diameter of bolt circle	Kg/piece
DN	D	C1	B1		L	k	
10	75.0	12.0	18.0	4	11.0	50.0	0.4
15	80.0	12.0	22.0	4	11.0	55.0	0.4
20	90.0	14.0	27.5	4	11.0	65.0	0.6
25	100.0	14.0	34.5	4	11.0	75.0	0.7
32	120.0	16.0	43.5	4	14.0	90.0	1.2
40	130.0	16.0	49.5	4	14.0	100.0	1.4
50	140.0	16.0	61.5	4	14.0	110.0	1.5
65	160.0	16.0	77.5	4	14.0	130.0	1.9
80	190.0	18.0	90.5	4	18.0	150.0	3.0
100	210.0	18.0	116.0	4	18.0	170.0	3.3
125	240.0	20.0	141.5	8	18.0	200.0	4.3
150	265.0	20.0	170.5	8	18.0	225.0	4.8
200	320.0	22.0	221.5	8	18.0	280.0	6.9
250	375.0	24.0	276.5	12	18.0	335.0	8.9
300	440.0	24.0	327.5	12	22.0	395.0	11.9
350	490.0	26.0	359.5	12	22.0	445.0	16.8
400	540.0	28.0	411.0	16	22.0	495.0	19.8
450	595.0	30.0	462.0	16	22.0	550.0	24.6
500	645.0	30.0	513.5	20	22.0	600.0	26.4
600	755.0	32.0	616.5	20	26.0	705.0	34.8
700	860.0	40.0		24	26.0	810.0	-
800	975.0	44.0		24	30.0	920.0	-
900	1075.0	48.0	To be specified by the Purchaser	24	30.0	1020.0	-
1000	1175.0	52.0		28	30.0	1120.0	-
1200	1405.0	60.0		32	33.0	1340.0	-

▪ Weights are approximate.



Flakkelas flens Plain welding flange Bride plate à souder Glatter flansch

TYPE 01/A - PN10



Pipe	Flange Data			Drilling Data			Weight
Nominal pipe size	Outside diameter	Thickness	Bore diameter	Number of holes	Bolt hole diameter	Diameter of bolt circle	Kg/piece
DN	D	C1	B1		L	k	
10	90.0	14.0	18.0	4	14.0	60.0	0.6
15	95.0	14.0	22.0	4	14.0	65.0	0.7
20	105.0	16.0	27.5	4	14.0	75.0	0.9
25	115.0	16.0	34.5	4	14.0	85.0	1.1
32	140.0	18.0	43.5	4	18.0	100.0	1.8
40	150.0	18.0	49.5	4	18.0	110.0	2.1
50	165.0	20.0	61.5	4	18.0	125.0	2.7
65	185.0	20.0	77.5	4 or 8	18.0	145.0	3.2
80	200.0	20.0	90.5	8	18.0	160.0	3.6
100	220.0	22.0	116.0	8	18.0	180.0	4.4
125	250.0	22.0	141.5	8	18.0	210.0	5.4
150	285.0	24.0	170.5	8	22.0	240.0	7.1
200	340.0	24.0	221.5	8	22.0	295.0	9.3
250	395.0	26.0	276.5	12	22.0	350.0	11.8
300	445.0	26.0	327.5	12	22.0	400.0	13.6
350	505.0	30.0	359.5	16	22.0	460.0	20.4
400	565.0	32.0	411.0	16	26.0	515.0	27.5
450	615.0	36.0	462.0	20	26.0	565.0	33.6
500	670.0	38.0	513.5	20	26.0	620.0	40.2
600	780.0	42.0	616.5	20	30.0	725.0	54.5
700	895.0	50.0		24	30.0	840.0	-
800	1015.0	56.0		24	33.0	950.0	-
900	1115.0	62.0	To be specified by the Purchaser	28	33.0	1050.0	-
1000	1230.0	70.0		28	36.0	1160.0	-
1200	1455.0	83.0		32	39.0	1380.0	-

DN10 ~ DN40
= PN40
DN50 ~ DN150
= PN16

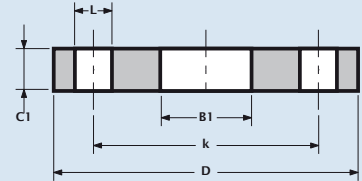
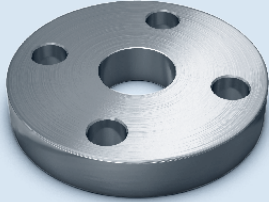
- Weights are approximate.
- DN65 available with 4 or 8 bolt holes.

Vlakkelas flens
Plain welding flange
Bride plate à souder
Glatter flansch



EN 1092-1
DN10 - DN1200

TYPE 01/A - PN16



Pipe	Flange Data			Drilling Data			Weight
Nominal pipe size	Outside diameter	Thickness	Bore diameter	Number of holes	Bolt hole diameter	Diameter of bolt circle	Kg/piece
DN	D	C1	B1		L	k	
10	90.0	14.0	18.0	4	14.0	60.0	0.6
15	95.0	14.0	22.0	4	14.0	65.0	0.7
20	105.0	16.0	27.5	4	14.0	75.0	0.9
25	115.0	16.0	34.5	4	14.0	85.0	1.1
32	140.0	18.0	43.5	4	18.0	100.0	1.8
40	150.0	18.0	49.5	4	18.0	110.0	2.1
50	165.0	20.0	61.5	4	18.0	125.0	2.7
65	185.0	20.0	77.5	4 or 8	18.0	145.0	3.2
80	200.0	20.0	90.5	8	18.0	160.0	3.6
100	220.0	22.0	116.0	8	18.0	180.0	4.4
125	250.0	22.0	141.5	8	18.0	210.0	5.4
150	285.0	24.0	170.5	8	22.0	240.0	7.1
200	340.0	26.0	221.5	12	22.0	295.0	9.7
250	405.0	29.0	276.5	12	26.0	355.0	14.2
300	460.0	32.0	327.5	12	26.0	410.0	19.0
350	520.0	35.0	359.0	16	26.0	470.0	28.2
400	580.0	38.0	411.0	16	30.0	525.0	35.9
450	640.0	42.0	462.0	20	30.0	585.0	46.1
500	715.0	46.0	513.5	20	33.0	650.0	64.0
600	840.0	55.0	616.5	20	36.0	770.0	102.0
700	910.0	63.0		24	36.0	840.0	-
800	1025.0	74.0		24	39.0	950.0	-
900	1125.0	82.0	To be specified by the Purchaser	28	39.0	1050.0	-
1000	1255.0	90.0		28	42.0	1170.0	-
1200	1485.0			32	48.0	1390.0	-

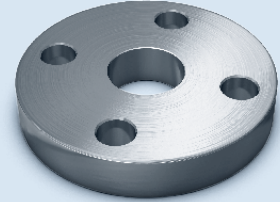
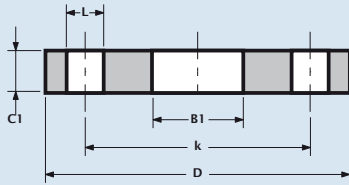
DN10 ~ DN40
= PN40

- Weights are approximate.
- DN65 available with 4 or 8 bolt holes.



Vlakkelas flens Plain welding flange Bride plate à souder Glatter flansch

TYPE 01/A - PN25



Pipe	Flange Data			Drilling Data			Weight
Nominal pipe size	Outside diameter	Thickness	Bore diameter	Number of holes	Bolt hole diameter	Diameter of bolt circle	Kg/piece
DN	D	C1	B1		L	k	
10	90.0	14.0	18.0	4	14.0	60.0	0.6
15	95.0	14.0	22.0	4	14.0	65.0	0.7
20	105.0	16.0	27.5	4	14.0	75.0	0.9
25	115.0	16.0	34.5	4	14.0	85.0	1.1
32	140.0	18.0	43.5	4	18.0	100.0	1.8
40	150.0	18.0	49.5	4	18.0	110.0	2.1
50	165.0	20.0	61.5	4	18.0	125.0	2.7
65	185.0	22.0	77.5	8	18.0	145.0	3.5
80	200.0	24.0	90.5	8	18.0	160.0	4.3
100	235.0	26.0	116.0	8	22.0	190.0	6.1
125	270.0	28.0	141.5	8	26.0	220.0	8.2
150	300.0	30.0	170.5	8	26.0	250.0	10.3
200	360.0	32.0	221.5	12	26.0	310.0	14.3
250	425.0	35.0	276.5	12	30.0	370.0	20.1
300	485.0	38.0	327.5	16	30.0	430.0	26.6
350	555.0	42.0	359.5	16	33.0	490.0	41.8
400	620.0	48.0	411.0	16	36.0	550.0	57.6
450	670.0	54.0	462.0	20	36.0	600.0	69.8
500	730.0	58.0	513.5	20	36.0	660.0	87.0
600	845.0	68.0	616.5	20	39.0	770.0	127.0
700	960.0	85.0		24	42.0	875.0	-
800	1085.0	95.0	To be specified by purchaser	24	48.0	990.0	-
900	1185.0	To be specified by purchaser		28	48.0	1090.0	-
1000	1320.0			28	56.0	1210.0	-

DN10 ~ DN150 = PN40

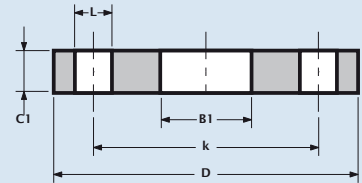
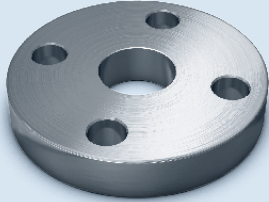
▪ Weights are approximate.

Vlakkelas flens
Plain welding flange
Bride plate à souder
Glatter flansch



EN 1092-1
DN10 - DN600

TYPE 01/A - PN40



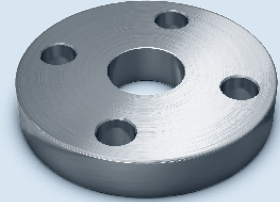
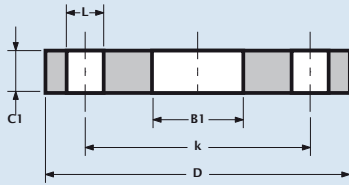
Pipe	Flange Data			Drilling Data			Weight
Nominal pipe size	Outside diameter	Thickness	Bore diameter	Number of holes	Bolt hole diameter	Diameter of bolt circle	Kg/piece
DN	D	C1	B1		L	k	
10	90.0	14.0	18.0	4	14.0	60.0	0.6
15	95.0	14.0	22.0	4	14.0	65.0	0.7
20	105.0	16.0	27.5	4	14.0	75.0	0.9
25	115.0	16.0	34.5	4	14.0	85.0	1.1
32	140.0	18.0	43.5	4	18.0	100.0	1.8
40	150.0	18.0	49.5	4	18.0	110.0	2.1
50	165.0	20.0	61.5	4	18.0	125.0	2.7
65	185.0	22.0	77.5	8	18.0	145.0	3.5
80	200.0	24.0	90.5	8	18.0	160.0	4.3
100	235.0	26.0	116.0	8	22.0	190.0	6.1
125	270.0	28.0	141.5	8	26.0	220.0	8.2
150	300.0	30.0	170.5	8	26.0	250.0	10.3
200	375.0	36.0	221.5	12	30.0	320.0	17.9
250	450.0	42.0	276.5	12	33.0	385.0	29.3
300	515.0	52.0	327.5	16	33.0	450.0	45.1
350	580.0	58.0	359.5	16	36.0	510.0	66.7
400	660.0	65.0	411.0	16	39.0	585.0	97.1
450	685.0	To be specified by purchaser	462.0	20	39.0	610.0	-
500	755.0		513.5	20	42.0	670.0	-
600	890.0		616.5	20	48.0	795.0	-

- Weights are approximate.
- DN65 available with 4 or 8 bolt holes.



Flakkelas flens Plain welding flange Bride plate à souder Glatter flansch

TYPE 01/A - PN63



Pipe	Flange Data			Drilling Data			Weight
Nominal pipe size	Outside diameter	Thickness	Bore diameter	Number of holes	Bolt hole diameter	Diameter of bolt circle	Kg/piece
DN	D	C1	B1		L	k	
10	100.0	20.0	18.0	4	14.0	70.0	1.0
15	105.0	20.0	22.0	4	14.0	75.0	1.1
20	130.0	22.0	27.5	4	18.0	90.0	1.9
25	140.0	24.0	34.5	4	18.0	100.0	2.4
32	155.0	24.0	43.5	4	22.0	110.0	2.8
40	170.0	26.0	49.5	4	22.0	125.0	3.6
50	180.0	26.0	61.5	4	22.0	135.0	5.0
65	205.0	26.0	77.5	8	22.0	160.0	4.7
80	215.0	30.0	90.5	8	22.0	170.0	5.9
100	250.0	32.0	116.0	8	26.0	200.0	8.1
125	295.0	34.0	141.5	8	30.0	240.0	11.7
150	345.0	36.0	170.5	8	33.0	280.0	16.9
200	415.0	48.0	221.5	12	36.0	345.0	30.5
250	470.0	55.0	276.5	12	36.0	400.0	42.1
300	530.0	65.0	327.5	16	36.0	460.0	59.1
350	600.0	72.0	359.5	16	39.0	525.0	88.7
400	670.0	80.0	411.0	16	42.0	585.0	121.0

DN10 - DN40
= PN100

▪ Weights are approximate.

TYPE 01/A - PN100

Pipe	Flange Data			Drilling Data			Weight
Nominal pipe size	Outside diameter	Thickness	Bore diameter	Number of holes	Bolt hole diameter	Diameter of bolt circle	Kg/piece
DN	D	C1	B1		L	k	
10	100.0	20.0	18.0	4	14.0	70.0	1.0
15	105.0	20.0	22.0	4	14.0	75.0	1.1
20	130.0	22.0	27.5	4	18.0	90.0	1.9
25	140.0	24.0	34.5	4	18.0	100.0	2.4
32	155.0	24.0	43.5	4	22.0	110.0	2.8
40	170.0	26.0	49.5	4	22.0	125.0	3.6
50	195.0	28.0	61.5	4	26.0	145.0	5.0
65	220.0	30.0	77.5	8	26.0	170.0	6.3
80	230.0	34.0	90.5	8	26.0	180.0	7.7
100	265.0	36.0	116.0	8	30.0	210.0	10.3
125	315.0	42.0	141.5	8	33.0	250.0	17.2
150	355.0	48.0	170.5	12	33.0	290.0	23.6
200	430.0	60.0	221.5	12	36.0	360.0	42.9
250	505.0	72.0	276.5	12	39.0	430.0	69.0
300	585.0	84.0	327.5	16	42.0	500.0	104.0
350	655.0	95.0	359.5	16	48.0	560.0	150.0

▪ Weights are approximate.
▪ DN65 available with 4 or 8 bolt holes.

▪ For flange facing types see Technical Data, page 33