



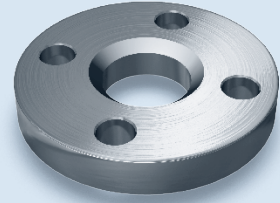
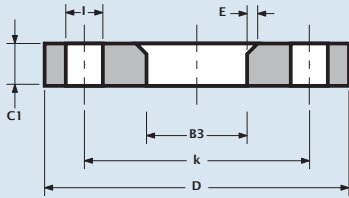
DN10 - DN600



304/304L (1.4301/1.4307) ■ 321/321H (1.4541)
 316/316L (1.4401/1.4404) ■ 316Ti (1.4571)
 904L (1.4539) ■ (Super)Duplex ■ Nickel Alloys

Loose flange
 Lose Flansche
 Bride folle
 Overschuifflens

EN 1092-1 TYPE 04/A - PN10



Pipe	Flange data				Drilling data				Weight
	Nominal pipe size	Outside diameter	Thickness	Bore diameter	Chamfer	Number of holes	Bolt hole diameter	Diameter of bolt circle	
DN	D	C1	B3	E		I	k	kg/pc	
10	90.0	14.0	31.0	3.0	4	14.0	60.0	0.5	
15	95.0	14.0	35.0	3.0	4	14.0	65.0	0.6	
20	105.0	16.0	42.0	4.0	4	14.0	75.0	0.8	
25	115.0	16.0	49.0	4.0	4	14.0	85.0	1.0	
32	140.0	18.0	59.0	5.0	4	18.0	100.0	1.7	
40	150.0	18.0	67.0	5.0	4	18.0	110.0	1.9	
50	165.0	20.0	77.0	5.0	4	18.0	125.0	2.3	
65	185.0	20.0	96.0	6.0	4 or 8	18.0	145.0	2.8	
80	200.0	20.0	108.0	6.0	8	18.0	160.0	3.2	
100	220.0	22.0	134.0	6.0	8	18.0	180.0	3.8	
125	250.0	22.0	162.0	6.0	8	18.0	210.0	4.6	
150	285.0	24.0	188.0	6.0	8	22.0	240.0	6.2	
200	340.0	24.0	240.0	6.0	8	22.0	295.0	7.9	
250	395.0	26.0	294.0	8.0	12	22.0	350.0	10.0	
300	445.0	26.0	348.0	8.0	12	22.0	400.0	11.1	
350	505.0	30.0	400.0	8.0	16	22.0	460.0	14.7	
400	565.0	32.0	450.0	8.0	16	26.0	515.0	20.5	
450	615.0	36.0	498.0	8.0	20	26.0	565.0	25.5	
500	670.0	38.0	550.0	8.0	20	26.0	620.0	30.7	
600	780.0	42.0	650.0	8.0	20	30.0	725.0	43.0	

DN65 ~ DN150 = PN16
 DN10 ~ DN50 = PN40

- Weights are approximate.
- DN65 available with 4 or 8 bolt holes.

Loose flange
Lose Flansche
Bride folle
Overschuifflens

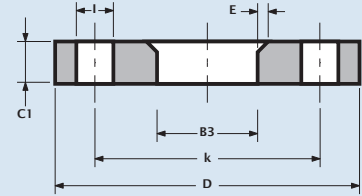
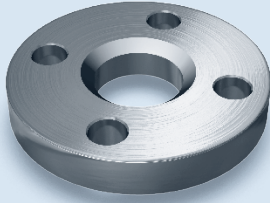


DN10 - DN600



304/304L (1.4301/1.4307) ■ 321/321H (1.4541)
316/316L (1.4401/1.4404) ■ 316Ti (1.4571)
904L (1.4539) ■ (Super)Duplex ■ Nickel Alloys

EN 1092-1 TYPE 04/A - PN16



Pipe	Flange data				Drilling data				Weight
Nominal pipe size	Outside diameter	Thickness	Bore diameter	Chamfer	Number of holes	Bolt hole diameter	Diameter of bolt circle		
DN	D	C1	B3	E		I	k	kg/pc	
10	90.0	14.0	21.0	3.0	4	14.0	60.0	0.5	
15	95.0	14.0	25.0	3.0	4	14.0	65.0	0.6	
20	105.0	16.0	31.0	4.0	4	14.0	75.0	0.8	
25	115.0	16.0	38.0	4.0	4	14.0	85.0	1.0	
32	140.0	18.0	47.0	5.0	4	18.0	100.0	1.7	
40	150.0	18.0	53.0	5.0	4	18.0	110.0	1.9	
50	165.0	20.0	65.0	5.0	4	18.0	125.0	2.3	
65	185.0	20.0	81.0	6.0	4 or 8	18.0	145.0	2.8	
80	200.0	20.0	94.0	6.0	8	18.0	160.0	3.2	
100	220.0	22.0	120.0	6.0	8	18.0	180.0	3.8	
125	250.0	22.0	145.0	6.0	8	18.0	210.0	4.6	
150	285.0	24.0	174.0	6.0	8	22.0	240.0	6.2	
200	340.0	26.0	226.0	6.0	12	22.0	295.0	8.4	
250	405.0	29.0	281.0	8.0	12	26.0	355.0	12.4	
300	460.0	32.0	333.0	8.0	12	26.0	410.0	16.3	
350	520.0	35.0	365.0	8.0	16	26.0	470.0	21.5	
400	580.0	38.0	416.0	8.0	16	30.0	525.0	27.1	
450	640.0	42.0	467.0	8.0	20	30.0	585.0	36.7	
500	715.0	46.0	519.0	8.0	20	33.0	650.0	51.1	
600	840.0	55.0	622.0	8.0	20	36.0	770.0	78.3	

DN10 ~ DN50 = PN40

- Weights are approximate.
- DN65 available with 4 or 8 bolt holes.



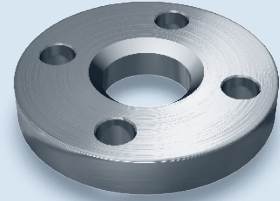
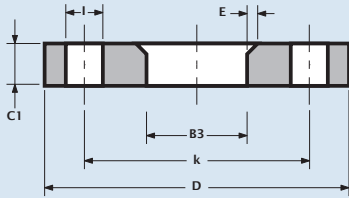
DN10 - DN600



304/304L (1.4301/1.4307) ■ 321/321H (1.4541)
 316/316L (1.4401/1.4404) ■ 316Ti (1.4571)
 904L (1.4539) ■ (Super)Duplex ■ Nickel Alloys

Loose flange
 Lose Flansche
 Bride folle
 Overschuifflens

EN 1092-1 TYPE 04/A - PN25



Pipe	Flange data				Drilling data				Weight
	Nominal pipe size	Outside diameter	Thickness	Bore diameter	Chamfer	Number of holes	Bolt hole diameter	Diameter of bolt circle	
DN	D	C1	B3	E		I	k	kg/pc	
10	90.0	14.0	21.0	3.0	4	14.0	60.0	0.5	
15	95.0	14.0	25.0	3.0	4	14.0	65.0	0.6	
20	105.0	16.0	31.0	4.0	4	14.0	75.0	0.8	
25	115.0	16.0	38.0	4.0	4	14.0	85.0	1.0	
32	140.0	18.0	47.0	5.0	4	18.0	100.0	1.7	
40	150.0	18.0	53.0	5.0	4	18.0	110.0	1.9	
50	165.0	20.0	65.0	5.0	4	18.0	125.0	2.5	
65	185.0	22.0	81.0	6.0	8	18.0	145.0	3.0	
80	200.0	24.0	94.0	6.0	8	18.0	160.0	3.6	
100	235.0	26.0	120.0	6.0	8	22.0	190.0	5.2	
125	270.0	28.0	145.0	6.0	8	26.0	220.0	6.9	
150	300.0	30.0	174.0	6.0	8	26.0	250.0	8.9	
200	360.0	32.0	226.0	6.0	12	26.0	310.0	11.6	
250	425.0	35.0	281.0	8.0	12	30.0	370.0	17.0	
300	485.0	38.0	333.0	8.0	16	30.0	430.0	22.0	
350	555.0	42.0	365.0	8.0	16	33.0	490.0	32.1	
400	620.0	48.0	416.0	8.0	16	36.0	550.0	44.5	
450	670.0	54.0	467.0	8.0	20	36.0	600.0	54.2	
500	730.0	58.0	519.0	8.0	20	36.0	660.0	65.9	
600	845.0	68.0	622.0	8.0	20	39.0	770.0	98.4	

■ Weights are approximate.

DN10 ~ DN150 = PN40

Loose flange
Lose Flansche
Bride folle
Overschuifflens

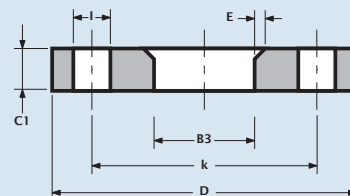
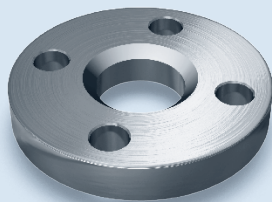


DN10 - DN600



304/304L (1.4301/1.4307) ■ 321/321H (1.4541)
316/316L (1.4401/1.4404) ■ 316Ti (1.4571)
904L (1.4539) ■ (Super)Duplex ■ Nickel Alloys

EN 1092-1 TYPE 04/A - PN40



Pipe	Flange data				Drilling data				Weight
Nominal pipe size	Outside diameter	Thickness	Bore diameter	Chamfer	Number of holes	Bolt hole diameter	Diameter of bolt circle		
DN	D	C1	B3	E		l	k	kg/pc	
10	90.0	14.0	21.0	3.0	4	14.0	60.0	0.5	
15	95.0	14.0	25.0	3.0	4	14.0	65.0	0.6	
20	105.0	16.0	31.0	4.0	4	14.0	75.0	0.8	
25	115.0	16.0	38.0	4.0	4	14.0	85.0	1.0	
32	140.0	18.0	47.0	5.0	4	18.0	100.0	1.7	
40	150.0	18.0	53.0	5.0	4	18.0	110.0	1.9	
50	165.0	20.0	65.0	5.0	4	18.0	125.0	2.5	
65	185.0	22.0	81.0	6.0	8	18.0	145.0	3.0	
80	200.0	24.0	94.0	6.0	8	18.0	160.0	3.6	
100	235.0	26.0	120.0	6.0	8	22.0	190.0	5.2	
125	270.0	28.0	145.0	6.0	8	26.0	220.0	6.9	
150	300.0	30.0	174.0	6.0	8	26.0	250.0	8.7	
200	375.0	36.0	226.0	6.0	12	30.0	320.0	14.9	
250	450.0	42.0	281.0	8.0	12	33.0	385.0	23.8	
300	515.0	52.0	333.0	8.0	16	33.0	450.0	36.0	
350	580.0	58.0	365.0	8.0	16	36.0	510.0	50.4	
400	660.0	65.0	416.0	8.0	16	39.0	585.0	75.5	
450	685.0		467.0	8.0	20	39.0	610.0	-	
500	755.0	To be specified by purchaser	519.0	8.0	20	42.0	670.0	-	
600	890.0		622.0	8.0	20	48.0	795.0	-	

▪ Weights are approximate.