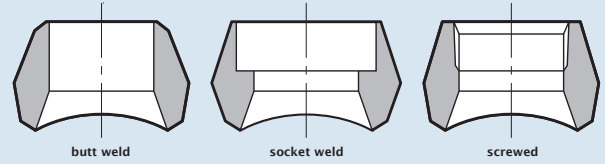
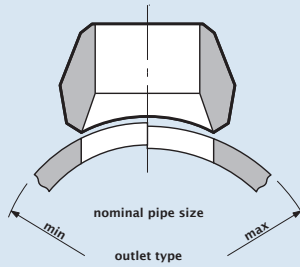
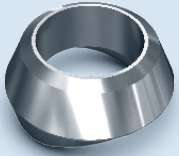


ASME B16.11 - 3000LBS MSS-SP97



Weldolet				
Nominal Pipe Size	Run Pipe Size	Schedule size		
NPS	NPS			
1/4"	3/8" - 36"	10s	40s	80s
3/8"	1/2" - 36"	10s	40s	80s
1/2"	3/4" - 36"	10s	40s	80s
3/4"	1" - 2 1/2"	10s	40s	80s
3/4"	3" - 36"	10s	40s	80s
1"	1 1/4" - 2 1/2"	10s	40s	80s
1"	3" - 36"	10s	40s	80s
1 1/4"	1 1/2" - 2"	10s	40s	80s
1 1/4"	3" - 6"	10s	40s	80s
1 1/4"	8" - 36"	10s	40s	80s
1 1/2"	2" - 2 1/2"	10s	40s	80s
1 1/2"	3" - 6"	10s	40s	80s
1 1/2"	8" - 36"	10s	40s	80s
2"	2 1/2" - 3"	10s	40s	80s
2"	3 1/2" - 6"	10s	40s	80s
2"	8" - 36"	10s	40s	80s

Sockolet	
Nominal Pipe Size	Run Pipe Size
NPS	NPS
1/4"	3/8" - 36"
3/8"	1/2" - 36"
1/2"	3/4" - 36"
3/4"	1" - 2 1/2"
3/4"	3" - 36"
1"	1 1/4" - 2 1/2"
1"	3" - 36"
1 1/4"	1 1/2" - 2"
1 1/4"	3" - 6"
1 1/4"	8" - 36"
1 1/2"	2" - 2 1/2"
1 1/2"	3" - 6"
1 1/2"	8" - 36"
2"	2 1/2" - 3"
2"	3 1/2" - 6"
2"	8" - 36"

Threadolet - NPT	
Nominal Pipe Size	Run Pipe Size
NPS	NPS
1/4"	3/8" - 36"
3/8"	1/2" - 36"
1/2"	3/4" - 36"
3/4"	1" - 2 1/2"
3/4"	3" - 36"
1"	1 1/4" - 2 1/2"
1"	3" - 36"
1 1/4"	1 1/2" - 2"
1 1/4"	3" - 6"
1 1/4"	8" - 36"
1 1/2"	2" - 2 1/2"
1 1/2"	3" - 6"
1 1/2"	8" - 36"
2"	2 1/2" - 3"
2"	3 1/2" - 6"
2"	8" - 36"