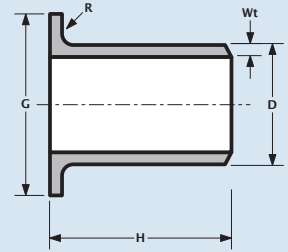


Stub end
Stub end
Stub end
Vorschweiss bunde



1/2" - 24" = ASME B16.9
MSS-SP43 TYPE A - short pattern

ASTM/ASME A/SA403



| Stub end | | | | | | | | | | | |
|-------------------|------------------|-----------------|--------|--------|--------|-------|------------|-------|-----------|-------|--|
| Nominal pipe size | Outside diameter | Diameter of lap | Height | Radius | sch10s | | sch40s/STD | | sch80s/XS | | |
| | | | | | Wt | kg/pc | Wt | kg/pc | Wt | kg/pc | |
| NPS | D | G | H | R | | | | | | | |
| 1/2" | 21.34 | 34.90 | 50.80 | 3.0 | 2.11 | 0.07 | 2.77 | 0.09 | 3.73 | 0.15 | |
| 3/4" | 26.70 | 42.90 | 50.80 | 3.0 | 2.11 | 0.10 | 2.87 | 0.12 | 3.91 | 0.17 | |
| 1" | 33.40 | 50.80 | 50.80 | 3.0 | 2.77 | 0.16 | 3.38 | 0.17 | 4.55 | 0.19 | |
| 1 1/4" | 42.16 | 63.50 | 50.80 | 5.0 | 2.77 | 0.22 | 3.56 | 0.25 | 4.85 | 0.27 | |
| 1 1/2" | 48.26 | 73.00 | 50.80 | 6.0 | 2.77 | 0.25 | 3.68 | 0.31 | 5.08 | 0.36 | |
| 2" | 60.33 | 92.10 | 63.50 | 8.0 | 2.77 | 0.43 | 3.91 | 0.61 | 5.54 | 0.76 | |
| 2 1/2" | 73.03 | 104.80 | 63.50 | 8.0 | 3.05 | 0.57 | 5.16 | 0.80 | 7.01 | 1.03 | |
| 3" | 88.90 | 127.00 | 63.50 | 10.0 | 3.05 | 0.73 | 5.49 | 1.13 | 7.62 | 1.43 | |
| 4" | 114.30 | 157.20 | 76.20 | 11.0 | 3.05 | 1.09 | 6.02 | 1.87 | 8.56 | 2.56 | |
| 5" | 141.30 | 185.70 | 76.20 | 11.0 | 3.40 | 1.47 | 6.55 | 2.28 | 9.53 | 3.26 | |
| 6" | 168.28 | 215.90 | 88.90 | 13.0 | 3.40 | 2.15 | 7.11 | 3.57 | 10.97 | 5.10 | |
| 8" | 219.08 | 269.90 | 101.60 | 13.0 | 3.76 | 3.60 | 8.18 | 6.07 | 12.70 | 9.88 | |
| 10" | 273.05 | 323.90 | 127.00 | 13.0 | 4.19 | 5.35 | 9.27 | 10.07 | 12.70 | 12.58 | |
| 12" | 323.85 | 381.00 | 152.40 | 13.0 | 4.57 | 8.16 | 9.53 | 13.80 | 12.70 | 20.21 | |
| 14" | 355.60 | 412.80 | 152.40 | 13.0 | 4.78 | 9.12 | 9.53 | 16.38 | 12.70 | 21.78 | |
| 16" | 406.40 | 469.90 | 152.40 | 13.0 | 4.78 | 11.02 | 9.53 | 19.12 | 12.70 | 22.85 | |
| 18" | 457.20 | 533.40 | 152.40 | 13.0 | 4.78 | 12.90 | 9.53 | 22.42 | 12.70 | 29.37 | |
| 20" | 508.00 | 584.20 | 152.40 | 13.0 | 5.54 | 14.51 | 9.53 | 24.85 | 12.70 | 29.73 | |
| 22" | 558.80 | 641.40 | 152.40 | 13.0 | 5.54 | 16.85 | 9.53 | 27.93 | 12.70 | 33.42 | |
| 24" | 609.60 | 692.20 | 152.40 | 13.0 | 6.35 | 21.01 | 9.53 | 30.39 | 12.70 | 36.38 | |