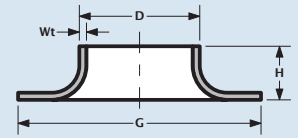
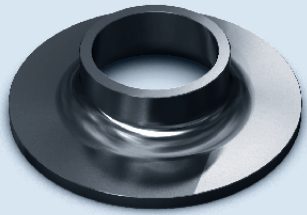




EN1092-1 TYPE 37 / ISO



Pressed collar						
Nominal Pipe Size	Outside Diameter	Wall thickness	Diameter of lap	Height	Weight	
DN	D	Wt	G	H	kg	
10	17.2	2.0	42.0	6.0	0.02	
10	17.2	2.5	40.0	7.0	0.02	
-	20.0	2.0	47.0	6.0	0.02	
15	21.3	2.0	47.0	6.0	0.03	
15	21.3	2.5	45.0	7.0	0.04	
15	21.3	3.0	47.0	6.0	0.05	
-	25.0	2.0	58.0	7.0	0.03	
20	26.9	2.0	58.0	8.0	0.04	
20	26.9	3.0	58.0	8.0	0.06	
-	28.0	2.0	68.0	8.0	0.05	
-	30.0	2.0	68.0	8.0	0.05	
-	32.0	2.0	68.0	9.0	0.06	
25	33.7	2.0	68.0	9.0	0.05	
25	33.7	3.0	68.0	9.0 / 10.0	0.08 / 0.08	
-	38.0	2.0	78.0	10.0	0.07	
32	42.4	2.0	78.0	10.0	0.10	
32	42.4	3.0	78.0	10.0 / 12.0	0.09 / 0.10	
-	44.5	2.0	90.0	10.0	0.09	
40	48.3	2.0	88.0	10.0	0.08	
40	48.3	3.0	88.0	10.0 / 15.0	0.12 / 0.13	
-	50.8	2.0	102.0	11.0	0.10	
-	54.0	2.0	102.0	12.0	0.11	
-	56.0	3.0	102.0	15.0	0.17	
-	57.0	2.0	102.0	13.0	0.11	
-	57.0	3.0	102.0	13.0	0.17	
50	60.3	2.0	102.0	12.0	0.11	
50	60.3	3.0	102.0	12.0	0.16	
50	60.3	4.0	102.0	12.0 / 20.0	0.22 / 0.25	
-	63.5	2.0	115.0	13.0	0.12	
-	70.0	2.0	122.0	12.0	0.15	
-	70.0	3.0	122.0	12.0	0.23	
-	71.0	3.0	122.0	12.0	0.23	
65	76.1	2.0	122.0	12.0	0.15	
65	76.1	3.0	122.0	12.0	0.22	
65	76.1	4.0	122.0	12.0 / 20.0	0.29 / 0.34	
-	80.0	2.0	122.0	13.0	0.15	
-	84.0	2.0	138.0	13.0	0.19	
-	86.0	3.0	138.0	15.0	0.28	
80	88.9	2.0	133.0	13.0	0.16	
80	88.9	3.0	133.0	13.0	0.28	
80	88.9	4.0	139.0	12.0 / 0.25	0.37 / 0.42	
-	101.6	2.0	150.0	14.0	0.21	
-	101.6	3.0	150.0	14.0	0.31	
-	104.0	2.0	158.0	16.0	0.24	
-	106.0	3.0	158.0	16.0	0.36	
-	108.0	2.0	158.0	14.0	0.22	
-	108.0	3.0	158.0	14.0	0.36	

Pressed collar						
Nominal Pipe Size	Outside Diameter	Wall thickness	Diameter of lap	Height	Weight	
DN	D	Wt	G	H	kg	
-	108.0	4.0	158.0	14.0	0.43	
100	114.3	2.0	158.0	14.0	0.21	
100	114.3	3.0	158.0	14.0	0.23	
100	114.3	4.0	158.0	14.0 / 0.25	0.43 / 0.49	
-	129.0	2.0	188.0	15.0	0.31	
-	131.0	3.0	188.0	20.0	0.47	
-	133.0	2.0	188.0	19.0	0.31	
-	133.0	3.0	188.0	19.0	0.47	
-	133.0	4.0	188.0	19.0	0.56	
125	139.7	2.0	184.0	15.0	0.26	
125	139.7	3.0	184.0	15.0	0.42	
125	139.7	4.0	184.0	15.0	0.56	
125	139.7	4.0	188.0	25.0	0.62	
-	154.0	2.0	212.0	19.0	0.38	
-	156.0	3.0	212.0	20.0	0.57	
-	159.0	2.0	212.0	17.0	0.34	
-	159.0	3.0	212.0	18.0	0.51	
-	159.0	4.0	212.0	18.0	0.64	
150	168.3	2.0	212.0	18.0	0.32	
150	168.3	3.0	212.0	18.0	0.48	
150	168.3	4.0	212.0	17.0 / 25.0	0.64 / 0.71	
-	204.0	2.0	268.0	21.0	0.54	
-	206.0	3.0	268.0	25.0	0.82	
200	219.1	2.0	268.0	22.0	0.46	
200	219.1	3.0	268.0	22.0	0.71	
200	219.1	4.0	270.0	18.0	0.97	
200	219.1	4.0	268.0	30.0	1.10	
-	254.0	2.0	320.0	24.0	0.71	
-	256.0	3.0	320.0	25.0	1.07	
250	273.0	2.0	320.0	23.0	0.53	
250	273.0	3.0	320.0	23.0	0.84	
250	273.0	4.0	320.0	23.0	1.11	
-	304.0	2.0	370.0	19.0	0.80	
-	306.0	3.0	370.0	21.0	1.21	
300	323.9	2.0	370.0	19.0	0.65	
300	323.9	3.0	370.0	19.0	0.96	
300	323.9	4.0	370.0	19.0	1.28	
350	355.6	3.0	430.0	21.0	1.52	
350	355.6	4.0	430.0	21.0	2.02	
400	406.4	3.0	482.0	21.0	1.78	
400	406.4	4.0	482.0	21.0	2.36	
450	457.2	3.0	532.0	25.0	2.09	
450	457.2	4.0	532.0	25.0	2.88	
500	508.0	3.0	587.0	27.0	2.29	
500	508.0	4.0	587.0	27.0	3.05	
600	609.6	3.0	685.0	26.0	2.72	
600	609.6	4.0	685.0	26.0	3.63	