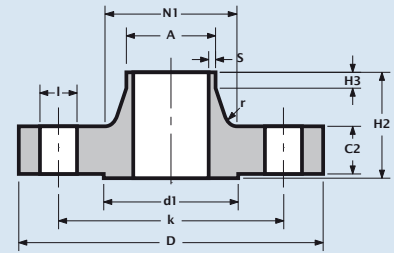
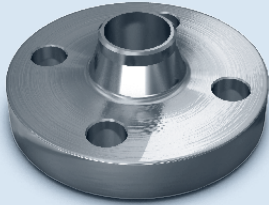


Voorlas flens
Welding neck flange
Bride à talon
Vorschweisflansch



EN 1092-1
DN10 - DN1200

TYPE 11/B1 - PN6



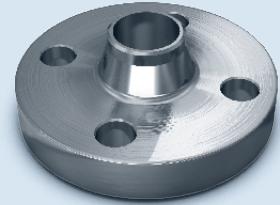
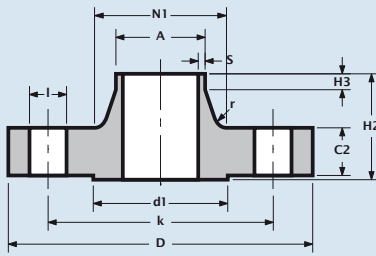
Pipe	Flange Data			Hub Data					Flange facing	Drilling Data			Weight
Nominal pipe size	Outside diameter	Thickness	Length through hub	Length of straight part of hub	Wall thickness	Radius	Outside diameter	Diameter of hub	Diameter of facing	Number of holes	Bolt hole diameter	Diameter of bolt circle	Kg / piece
DN	D	C2	H2	H3	S	r	A	N1	d1		l	k	
10	75.0	12.0	28.0	6.0	2.0	4.0	17.2	26.0	35.0	4	11.0	50.0	0.4
15	80.0	12.0	30.0	6.0	2.0	4.0	21.3	30.0	40.0	4	11.0	55.0	0.4
20	90.0	14.0	32.0	6.0	2.3	4.0	26.9	38.0	50.0	4	11.0	65.0	0.6
25	100.0	14.0	35.0	6.0	2.6	4.0	33.7	42.0	60.0	4	11.0	75.0	0.7
32	120.0	14.0	35.0	6.0	2.6	6.0	42.4	55.0	70.0	4	14.0	90.0	1.1
40	130.0	14.0	38.0	7.0	2.6	6.0	48.3	62.0	80.0	4	14.0	100.0	1.3
50	140.0	14.0	38.0	8.0	2.9	6.0	60.3	74.0	90.0	4	14.0	110.0	1.4
65	160.0	14.0	38.0	9.0	2.9	6.0	76.1	88.0	110.0	4	14.0	130.0	1.8
80	190.0	16.0	42.0	10.0	3.2	8.0	88.9	102.0	128.0	4	18.0	150.0	2.9
100	210.0	16.0	45.0	10.0	3.6	8.0	114.3	130.0	148.0	4	18.0	170.0	3.4
125	240.0	18.0	48.0	10.0	4.0	8.0	139.7	155.0	178.0	8	18.0	200.0	4.7
150	265.0	18.0	48.0	12.0	4.5	10.0	168.3	184.0	202.0	8	18.0	225.0	5.5
200	320.0	20.0	55.0	15.0	6.3	10.0	219.1	236.0	258.0	8	18.0	280.0	8.6
250	375.0	22.0	60.0	15.0	6.3	12.0	273.0	290.0	312.0	12	18.0	335.0	11.7
300	440.0	22.0	62.0	15.0	7.1	12.0	323.9	342.0	365.0	12	22.0	395.0	15.3
350	490.0	22.0	62.0	15.0	7.1	12.0	355.6	385.0	415.0	12	22.0	445.0	20.3
400	540.0	22.0	65.0	15.0	7.1	12.0	406.4	438.0	465.0	16	22.0	495.0	23.1
450	595.0	22.0	65.0	15.0	7.1	12.0	457.0	492.0	520.0	16	22.0	550.0	27.0
500	645.0	24.0	68.0	15.0	7.1	12.0	508.0	538.0	570.0	20	22.0	600.0	30.8
600	755.0	30.0	70.0	16.0	7.1	12.0	610.0	640.0	670.0	20	26.0	705.0	44.0
700	860.0	30.0	76.0	16.0	8.0	12.0	711.0	740.0	775.0	24	26.0	810.0	53.7
800	975.0	30.0	76.0	16.0	8.0	12.0	813.0	842.0	880.0	24	30.0	920.0	64.4
900	1075.0	34.0	78.0	16.0	8.0	12.0	914.0	942.0	980.0	24	30.0	1020.0	79.2
1000	1175.0	38.0	82.0	16.0	8.0	16.0	1016.0	1045.0	1080.0	28	30.0	1120.0	98.6
1200	1405.0	42.0	104.0	20.0	8.8	16.0	1219.0	1248.0	1295.0	32	33.0	1340.0	152.0

- Weights are approximate.
- Wall thickness "s" also available acc. ASTM schedule sizes.



Voorlas flens Welding neck flange Bride à talon Vorschweissflansch

TYPE 11/B1 - PN10



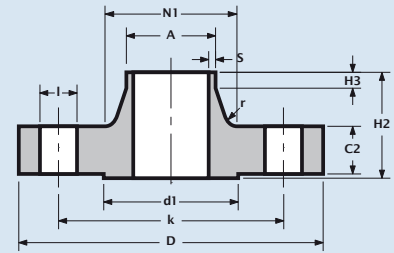
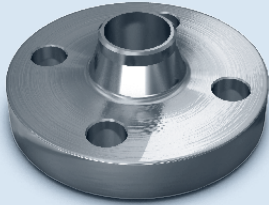
Pipe	Flange Data			Hub Data				Flange facing	Drilling Data			Weight	
Nominal pipe size	Outside diameter	Thickness	Length through hub	Length of straight part of hub	Wall thickness	Radius	Outside diameter	Diameter of hub	Diameter of facing	Number of holes	Bolt hole diameter	Diameter of bolt circle	Kg / piece
DN	D	C2	H2	H3	S	r	A	N1	d1	l	k		
10	90.0	16.0	35.0	6.0	2.0	4.0	17.2	28.0	40.0	4	14.0	60.0	0.7
15	95.0	16.0	38.0	6.0	2.0	4.0	21.3	32.0	45.0	4	14.0	65.0	0.8
20	105.0	18.0	40.0	6.0	2.3	4.0	26.9	40.0	58.0	4	14.0	75.0	1.1
25	115.0	18.0	40.0	6.0	2.6	4.0	33.7	46.0	68.0	4	14.0	85.0	1.3
32	140.0	18.0	42.0	6.0	2.6	6.0	42.4	56.0	78.0	4	18.0	100.0	1.9
40	150.0	18.0	45.0	7.0	2.6	6.0	48.3	64.0	88.0	4	18.0	110.0	2.2
50	165.0	18.0	45.0	8.0	2.9	6.0	60.3	74.0	102.0	4	18.0	125.0	2.5
65	185.0	18.0	45.0	10.0	2.9	6.0	76.1	92.0	122.0	4 or 8	18.0	145.0	3.0
80	200.0	20.0	50.0	10.0	3.2	6.0	88.9	105.0	138.0	8	18.0	160.0	3.9
100	220.0	20.0	52.0	12.0	3.6	8.0	114.3	131.0	158.0	8	18.0	180.0	4.6
125	250.0	22.0	55.0	12.0	4.0	8.0	139.7	156.0	188.0	8	18.0	210.0	6.3
150	285.0	22.0	55.0	12.0	4.5	10.0	168.3	184.0	212.0	8	22.0	240.0	7.8
200	340.0	24.0	62.0	16.0	6.3	10.0	219.1	234.0	268.0	8	22.0	295.0	11.6
250	395.0	26.0	68.0	16.0	6.3	12.0	273.0	292.0	320.0	12	22.0	350.0	15.8
300	445.0	26.0	68.0	16.0	7.1	12.0	323.9	342.0	370.0	12	22.0	400.0	18.3
350	505.0	26.0	68.0	16.0	7.1	12.0	355.6	385.0	430.0	16	22.0	460.0	25.3
400	565.0	26.0	72.0	16.0	7.1	12.0	406.4	440.0	482.0	16	26.0	515.0	30.6
450	615.0	28.0	72.0	16.0	7.1	12.0	457.0	488.0	532.0	20	26.0	565.0	35.1
500	670.0	28.0	75.0	16.0	7.1	12.0	508.0	542.0	585.0	20	26.0	620.0	40.5
600	780.0	30.0	82.0	18.0	8.0	12.0	610.0	642.0	685.0	20	30.0	725.0	52.9
700	895.0	35.0	85.0	18.0	8.8	12.0	711.0	746.0	800.0	24	30.0	840.0	75.8
800	1015.0	38.0	96.0	18.0	8.8	12.0	813.0	850.0	905.0	24	33.0	950.0	102.0
900	1115.0	38.0	99.0	20.0	12.5	12.0	914.0	950.0	1005.0	28	33.0	1050.0	121.0
1000	1230.0	44.0	105.0	20.0	12.5	16.0	1016.0	1052.0	1110.0	28	36.0	1160.0	161.0
1200	1455.0	55.0	132.0	25.0	12.5	16.0	1219.0	1256.0	1330.0	32	39.0	1380.0	258.0

- Weights are approximate.
- DN65 available with 4 or 8 bolt holes.
- Wall thickness "s" also available acc. ASTM schedule sizes.

DN10 ~ DN40 = PN40
 DN50 ~ DN150 = PN16



TYPE 11/B1 - PN16



Pipe	Flange Data			Hub Data					Flange facing	Drilling Data			Weight
Nominal pipe size	Outside diameter	Thickness	Length through hub	Length of straight part of hub	Wall thickness	Radius	Outside diameter	Diameter of hub	Diameter of facing	Number of holes	Bolt hole diameter	Diameter of bolt circle	Kg / piece
DN	D	C2	H2	H3	S	r	A	NI	d1		l	k	
10	90.0	16.0	35.0	6.0	2.0	4	17.2	28.0	40.0	4	14.0	60.0	0.7
15	95.0	16.0	38.0	6.0	2.0	4	21.3	32.0	45.0	4	14.0	65.0	0.8
20	105.0	18.0	40.0	6.0	2.3	4	26.9	40.0	58.0	4	14.0	75.0	1.1
25	115.0	18.0	40.0	6.0	2.6	4	33.7	46.0	68.0	4	14.0	85.0	1.3
32	140.0	18.0	42.0	6.0	2.6	6	42.4	56.0	78.0	4	18.0	100.0	1.9
40	150.0	18.0	45.0	7.0	2.6	6	48.3	64.0	88.0	4	18.0	110.0	2.2
50	165.0	18.0	45.0	8.0	2.9	6	60.3	74.0	102.0	4	18.0	125.0	2.5
65	185.0	18.0	45.0	10.0	2.9	6	76.1	92.0	122.0	4 or 8	18.0	145.0	3.0
80	200.0	20.0	50.0	10.0	3.2	6	88.9	105.0	138.0	8	18.0	160.0	3.9
100	220.0	20.0	52.0	12.0	3.6	8	114.3	131.0	158.0	8	18.0	180.0	4.6
125	250.0	22.0	55.0	12.0	4.0	8	139.7	156.0	188.0	8	18.0	210.0	6.3
150	285.0	22.0	55.0	12.0	4.5	10	168.3	184.0	212.0	8	22.0	240.0	7.8
200	340.0	24.0	62.0	16.0	6.3	10	219.1	235.0	268.0	12	22.0	295.0	11.5
250	405.0	26.0	70.0	16.0	6.3	12	273.0	292.0	320.0	12	26.0	355.0	16.7
300	460.0	28.0	78.0	16.0	7.1	12	323.9	344.0	378.0	12	26.0	410.0	22.1
350	520.0	30.0	82.0	16.0	8.0	12	355.6	390.0	438.0	16	26.0	470.0	32.8
400	580.0	32.0	85.0	16.0	8.0	12	406.4	445.0	490.0	16	30.0	525.0	41.1
450	640.0	34.0	83.0	16.0	8.0	12	457.0	490.0	550.0	20	30.0	585.0	50.6
500	715.0	36.0	84.0	16.0	8.0	12	508.0	548.0	610.0	20	33.0	650.0	66.2
600	840.0	40.0	88.0	18.0	10.0	12	610.0	670.0	725.0	20	36.0	770.0	104.0
700	910.0	40.0	104.0	18.0	10.0	12	711.0	755.0	795.0	24	36.0	840.0	96.5
800	1025.0	41.0	108.0	20.0	12.5	12	813.0	855.0	900.0	24	39.0	950.0	122.0
900	1125.0	48.0	118.0	20.0	12.5	12	914.0	955.0	1000.0	28	39.0	1050.0	155.0
1000	1255.0	59.0	137.0	22.0	12.5	16	1016.0	1058.0	1115.0	28	42.0	1170.0	233.0
1200	1485.0	78.0	160.0	30.0	14.2	16	1219.0	1262.0	1330.0	32	48.0	1390.0	390.0

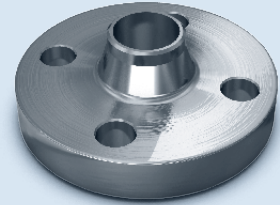
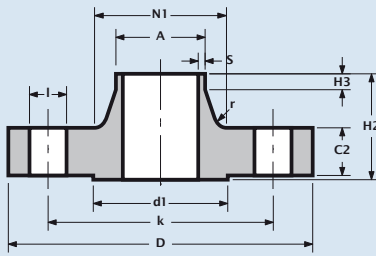
DN10 ~ DN40 =
PN40

- Weights are approximate.
- DN65 available with 4 or 8 bolt holes.
- Wall thickness "s" also available acc. ASTM schedule sizes.



Voorlas flens Welding neck flange Bride à talon Vorschweissflansch

TYPE 11/B1 - PN25



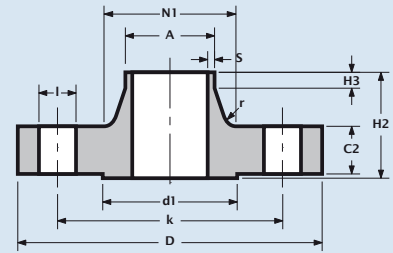
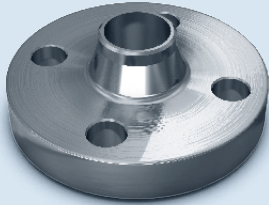
Pipe	Flange Data			Hub Data					Flange facing	Drilling Data			Weight
Nominal pipe size	Outside diameter	Thickness	Length through hub	Length of straight part of hub	Wall thickness	Radius	Outside diameter of neck	Diameter of hub	Diameter of facing	Number of holes	Bolt hole diameter	Diameter of bolt circle	Kg / piece
DN	D	C2	H2	H3	S	r	A	N1	d1	l	k		
10	90.0	16.0	35.0	6.0	2.0	4.0	17.2	28.0	40.0	4	14.0	60.0	0.7
15	95.0	16.0	38.0	6.0	2.0	4.0	21.3	32.0	45.0	4	14.0	65.0	0.8
20	105.0	18.0	40.0	6.0	2.3	4.0	26.9	40.0	58.0	4	14.0	75.0	1.1
25	115.0	18.0	40.0	6.0	2.6	4.0	33.7	46.0	68.0	4	14.0	85.0	1.3
32	140.0	18.0	42.0	6.0	2.6	6.0	42.4	56.0	78.0	4	18.0	100.0	1.9
40	150.0	18.0	45.0	7.0	2.6	6.0	48.3	64.0	88.0	4	18.0	110.0	2.2
50	165.0	20.0	48.0	8.0	2.9	6.0	60.3	75.0	102.0	4	18.0	125.0	2.9
65	185.0	22.0	52.0	10.0	2.9	6.0	76.1	90.0	122.0	8	18.0	145.0	3.7
80	200.0	24.0	58.0	12.0	3.2	8.0	88.9	105.0	138.0	8	18.0	160.0	4.8
100	235.0	24.0	65.0	12.0	3.6	8.0	114.3	134.0	162.0	8	22.0	190.0	6.5
125	270.0	26.0	68.0	12.0	4.0	8.0	139.7	162.0	188.0	8	26.0	220.0	8.9
150	300.0	28.0	75.0	12.0	4.5	10.0	168.3	192.0	218.0	8	26.0	250.0	11.7
200	360.0	30.0	80.0	16.0	6.3	10.0	219.1	244.0	278.0	12	26.0	310.0	17.1
250	425.0	32.0	88.0	18.0	7.1	12.0	273.0	298.0	335.0	12	30.0	370.0	24.3
300	485.0	34.0	92.0	18.0	8.0	12.0	323.9	352.0	395.0	16	30.0	430.0	31.8
350	555.0	38.0	100.0	20.0	8.0	12.0	355.6	398.0	450.0	16	33.0	490.0	48.8
400	620.0	40.0	110.0	20.0	8.8	12.0	406.4	452.0	505.0	16	36.0	550.0	63.3
450	670.0	46.0	110.0	20.0	8.8	12.0	457.0	500.0	555.0	20	36.0	600.0	76.0
500	730.0	48.0	125.0	20.0	10.0	12.0	508.0	558.0	615.0	20	36.0	660.0	97.0
600	845.0	48.0	125.0	20.0	11.0	12.0	610.0	660.0	720.0	20	39.0	770.0	121.0
700	960.0	50.0	129.0	20.0	14.2	12.0	711.0	760.0	820.0	24	42.0	875.0	155.0
800	1085.0	53.0	138.0	22.0	16.0	12.0	813.0	864.0	930.0	24	48.0	990.0	205.0
900	1185.0	57.0	148.0	24.0	17.5	12.0	914.0	968.0	1030.0	28	48.0	1090.0	249.0
1000	1320.0	63.0	160.0	24.0	20.0	16.0	1016.0	1070.0	1140.0	28	56.0	1210.0	338.0
1200	1485.0	78.0	160.0	30.0	14.2	16.0	1219.0	1262.0	1330.0	32	48.0	1390.0	390.0

DN10 ~ DN150 = PN40

- Weights are approximate.
- Wall thickness "s" also available acc. ASTM schedule sizes.



TYPE 11/B1 - PN40

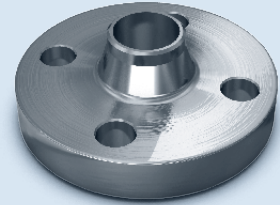
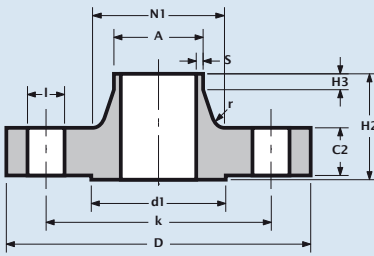


Pipe	Flange Data			Hub Data					Flange facing	Drilling Data			Weight
Nominal pipe size	Outside diameter	Thickness	Length through hub	Length of straight part of hub	Wall Thickness	Radius	Outside diameter of neck	Diameter of hub	Diameter of facing	Number of holes	Bolt hole diameter	Diameter of bolt circle	Kg/piece
DN	DN	C2	H2	H3	S	r	A	N1	d1		l	k	
10	90.0	16.0	35.0	6.0	2.0	4.0	17.2	28.0	40.0	4	14.0	60.0	0.7
15	95.0	16.0	38.0	6.0	2.0	4.0	21.3	32.0	45.0	4	14.0	65.0	0.8
20	105.0	18.0	40.0	6.0	2.3	4.0	26.9	40.0	58.0	4	14.0	75.0	1.1
25	115.0	18.0	40.0	6.0	2.6	4.0	33.7	46.0	68.0	4	14.0	85.0	1.3
32	140.0	18.0	42.0	6.0	2.6	6.0	42.4	56.0	78.0	4	18.0	100.0	1.9
40	150.0	18.0	45.0	7.0	2.6	6.0	48.3	64.0	88.0	4	18.0	110.0	2.2
50	165.0	20.0	48.0	8.0	2.9	6.0	60.3	75.0	102.0	4	18.0	125.0	2.9
65	185.0	22.0	52.0	10.0	2.9	6.0	76.1	90.0	122.0	8	18.0	145.0	3.7
80	200.0	24.0	58.0	12.0	3.2	8.0	88.9	105.0	138.0	8	18.0	160.0	4.8
100	235.0	24.0	65.0	12.0	3.6	8.0	114.3	134.0	162.0	8	22.0	190.0	6.5
125	270.0	26.0	68.0	12.0	4.0	8.0	139.7	162.0	188.0	8	26.0	220.0	8.9
150	300.0	28.0	75.0	12.0	4.5	10.0	168.3	192.0	218.0	8	26.0	250.0	11.7
200	375.0	34.0	88.0	16.0	6.3	10.0	219.1	244.0	285.0	12	30.0	320.0	21.0
250	450.0	38.0	105.0	18.0	7.1	12.0	273.0	306.0	345.0	12	33.0	385.0	34.2
300	515.0	42.0	115.0	18.0	8.0	12.0	323.9	362.0	410.0	16	33.0	450.0	47.6
350	580.0	46.0	125.0	20.0	8.8	12.0	355.6	408.0	465.0	16	36.0	510.0	69.3
400	660.0	50.0	135.0	20.0	11.0	12.0	406.4	462.0	535.0	16	39.0	585.0	98.0
450	685.0	57.0	135.0	20.0	12.5	12.0	457.0	500.0	560.0	20	39.0	610.0	105.0
500	755.0	57.0	140.0	20.0	14.2	12.0	508.0	562.0	615.0	20	42.0	670.0	130.0
600	890.0	72.0	150.0	20.0	16.0	12.0	610.0	666.0	735.0	20	48.0	795.0	209.0

- Weights are approximate.
- Wall thickness "s" also available acc. ASTM schedule sizes.



TYPE 11/B2 - PN63



Pipe	Flange Data			Hub Data					Flange facing	Drilling Data			Weight
Nominal pipe size	Outside diameter of flange	Thickness	Length through hub	Length of straight part of hub	Wall thickness	Radius	Outside diameter of neck	Diameter of hub	Diameter of facing	Number of holes	Bolt hole diameter	Diameter of bolt circle	Kg/ piece
DN	D	C2	H2	H3	S	r	A	N1	d1	l	k		
10	100.0	20.0	45.0	6.0	2.0	4.0	17.2	32.0	40.0	4	14.0	70.0	1.1
15	105.0	20.0	45.0	6.0	2.0	4.0	21.3	34.0	45.0	4	14.0	75.0	1.2
20	130.0	22.0	48.0	8.0	2.6	4.0	26.9	42.0	58.0	4	18.0	90.0	2.0
25	140.0	24.0	58.0	8.0	2.6	4.0	33.7	52.0	68.0	4	18.0	100.0	2.6
32	155.0	24.0	60.0	8.0	2.9	6.0	42.4	62.0	78.0	4	22.0	110.0	3.2
40	170.0	26.0	62.0	10.0	2.9	6.0	48.3	70.0	88.0	4	22.0	125.0	4.1
50	180.0	26.0	62.0	10.0	2.9	6.0	60.3	82.0	102.0	4	22.0	135.0	4.5
65	205.0	26.0	68.0	12.0	3.2	6.0	76.1	98.0	122.0	8	22.0	160.0	5.6
80	215.0	28.0	72.0	12.0	3.6	8.0	88.9	112.0	138.0	8	22.0	170.0	6.7
100	250.0	30.0	78.0	12.0	4.5	8.0	114.3	138.0	162.0	8	26.0	200.0	9.3
125	295.0	34.0	88.0	12.0	5.6	8.0	139.7	168.0	188.0	8	30.0	240.0	14.5
150	345.0	36.0	95.0	12.0	6.3	10.0	168.3	202.0	218.0	8	33.0	280.0	21.4
200	415.0	42.0	110.0	16.0	7.1	10.0	219.1	256.0	285.0	12	36.0	345.0	34.1
250	470.0	46.0	125.0	18.0	8.8	12.0	273.0	316.0	345.0	12	36.0	400.0	48.3
300	530.0	52.0	140.0	18.0	11.0	12.0	323.9	372.0	410.0	16	36.0	460.0	67.5
350	600.0	56.0	150.0	20.0	12.5	12.0	355.6	420.0	465.0	16	39.0	525.0	97.8
400	670.0	60.0	160.0	20.0	14.2	12.0	406.4	475.0	535.0	16	42.0	585.0	129.0

DN10 ~ DN40 = PN100

- Weights are approximate.
- Wall thickness "s" also available acc. ASTM schedule sizes.

TYPE 11/B2 - PN100

Pipe	Flange Data			Hub Data					Flange facing	Drilling Data			Weight
Nominal pipe size	Outside diameter	Thick-ness	Length through hub	Length of straight part of hub	Wall thickness	Radius	Outside diameter of neck	Diameter of hub	Diameter of facing	Number of holes	Bolt hole diameter	Diameter of bolt circle	Kg/piece
DN	DN	C2	H2	H3	S	r	A	N1	d1	l	k		
10	100.0	20.0	45.0	6.0	2.0	4.0	17.2	32.0	40.0	4	14.0	70.0	1.1
15	105.0	20.0	45.0	6.0	3.2	4.0	21.3	34.0	45.0	4	14.0	75.0	1.2
20	130.0	22.0	48.0	8.0	3.2	4.0	26.9	42.0	58.0	4	18.0	90.0	2.0
25	140.0	24.0	58.0	8.0	3.6	4.0	33.7	52.0	68.0	4	18.0	100.0	2.6
32	155.0	24.0	60.0	8.0	3.6	6.0	42.4	62.0	78.0	4	22.0	110.0	3.2
40	170.0	26.0	62.0	10.0	3.6	6.0	48.3	70.0	88.0	4	22.0	125.0	4.1
50	195.0	28.0	68.0	10.0	4.0	6.0	60.3	90.0	102.0	4	26.0	145.0	5.8
65	220.0	30.0	76.0	12.0	4.0	6.0	76.1	108.0	122.0	8	26.0	170.0	7.6
80	230.0	32.0	78.0	12.0	5.0	8.0	88.9	120.0	138.0	8	26.0	180.0	8.8
100	265.0	36.0	90.0	12.0	5.6	8.0	114.3	150.0	162.0	8	30.0	210.0	13.1
125	315.0	40.0	105.0	12.0	6.3	8.0	139.7	180.0	188.0	8	33.0	250.0	21.0
150	355.0	44.0	115.0	12.0	8.0	10.0	168.3	210.0	218.0	12	33.0	290.0	28.3
200	430.0	52.0	130.0	16.0	8.8	10.0	219.1	278.0	285.0	12	36.0	360.0	50.2
250	505.0	60.0	157.0	18.0	10.0	12.0	273.0	340.0	345.0	12	39.0	430.0	81.4
300	585.0	68.0	170.0	18.0	12.5	12.0	323.9	400.0	410.0	16	42.0	500.0	118.0
350	655.0	74.0	189.0	20.0	14.2	12.0	355.6	460.0	465.0	16	48.0	560.0	169.0

- Weights are approximate.
- Wall thickness "s" also available acc. ASTM schedule sizes.

▪ For flange facing types see Technical Data, page 33