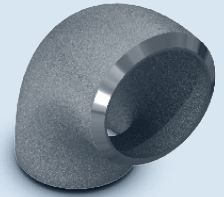
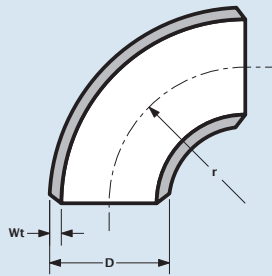




ASTM/ASME A/SA403



Elbow													
Nominal Pipe Size	Outside Diameter	Radius	sch10s		sch40s/STD		sch80s/XS		sch160		schXXS		
			NPS	D	r	Wt	kg/pc	Wt	kg/pc	Wt	kg/pc	Wt	kg/pc
3/8"	17.15	note	1.65	-	2.31	-	3.20	-	-	-	-	-	-
1/2"	21.34	38.10	2.11	0.06	2.77	0.08	3.73	0.11	4.78	0.14	7.47	0.22	-
3/4"	26.70	38.10	2.11	0.07	2.87	0.11	3.91	0.15	5.56	0.21	7.82	0.30	-
1"	33.40	38.10	2.77	0.14	3.38	0.16	4.55	0.22	6.35	0.30	9.09	0.43	-
1 1/4"	42.16	47.60	2.77	0.19	3.56	0.25	4.85	0.34	6.35	0.45	9.70	0.68	-
1 1/2"	48.26	57.20	2.77	0.27	3.68	0.37	5.08	0.51	7.14	0.72	10.15	1.02	-
2"	60.33	76.20	2.77	0.47	3.91	0.66	5.54	0.94	8.74	1.48	11.07	1.87	-
2 1/2"	73.03	95.30	3.05	0.78	5.16	1.32	7.01	1.79	9.53	2.44	14.02	3.59	-
3"	88.90	114.30	3.05	1.13	5.49	2.02	7.62	2.80	11.13	4.10	15.24	5.61	-
3 1/2"	101.60	133.40	3.05	1.54	5.74	2.96	8.08	4.17	-	-	-	-	-
4"	114.30	152.40	3.05	1.94	6.02	3.88	8.56	5.52	13.49	8.69	17.12	11.03	-
5"	141.30	190.50	3.40	3.36	6.55	6.62	9.53	9.63	15.88	16.05	19.05	19.25	-
6"	168.28	228.60	3.40	4.81	7.11	10.60	10.97	16.35	18.24	27.19	21.95	32.72	-
8"	219.08	304.80	3.76	9.27	8.18	20.30	12.70	31.52	23.01	57.10	22.23	55.17	-
10"	273.05	381.00	4.19	16.70	9.27	36.00	12.70	49.32	28.58	110.99	25.40	98.64	-
12"	323.85	457.00	4.57	28.00	9.53	54.00	12.70	71.96	33.32	188.80	25.40	143.92	-
14"	355.60	533.40	4.78	37.00	9.53	73.00	12.70	97.28	35.71	273.54	-	-	-
16"	406.40	609.60	4.78	48.00	9.53	95.00	12.70	126.60	40.46	403.33	-	-	-
18"	457.20	685.80	4.78	61.00	9.53	121.00	12.70	161.25	45.24	574.40	-	-	-
20"	508.00	762.00	5.54	90.50	9.53	150.00	12.70	199.90	50.01	787.15	-	-	-
22"	558.80	838.20	5.56	110.00	9.53	181.00	12.70	241.21	53.98	1025.22	-	-	-
24"	609.60	914.00	6.35	152.00	9.53	216.00	12.70	287.85	59.54	1349.49	-	-	-
26"	660.40	990.60	7.92	204.00	9.53	253.00	12.70	337.16	-	-	-	-	-
28"	711.20	1066.80	7.92	235.00	9.53	295.00	12.70	393.13	-	-	-	-	-
30"	762.00	1143.00	7.92	270.00	9.53	339.00	12.70	451.76	-	-	-	-	-
32"	812.80	1219.20	-	310.00	9.53	385.00	12.70	513.06	-	-	-	-	-
34"	863.60	1295.40	-	345.00	9.53	436.00	12.70	581.03	-	-	-	-	-
36"	914.40	1371.60	-	388.00	9.53	485.00	12.70	646.33	-	-	-	-	-
38"	965.20	1447.80	-	436.00	9.53	545.00	12.70	726.29	-	-	-	-	-
40"	1016.00	1524.00	-	-	9.53	-	12.70	-	-	-	-	-	-

▪ Radius of elbow 3/8" is at manufacturer's option